



# HOW TO INSTALL SPLITTER

September 2024

maxi

# 1. Create Directory to Save Splitter in your PC/Laptop. Download Splitter.

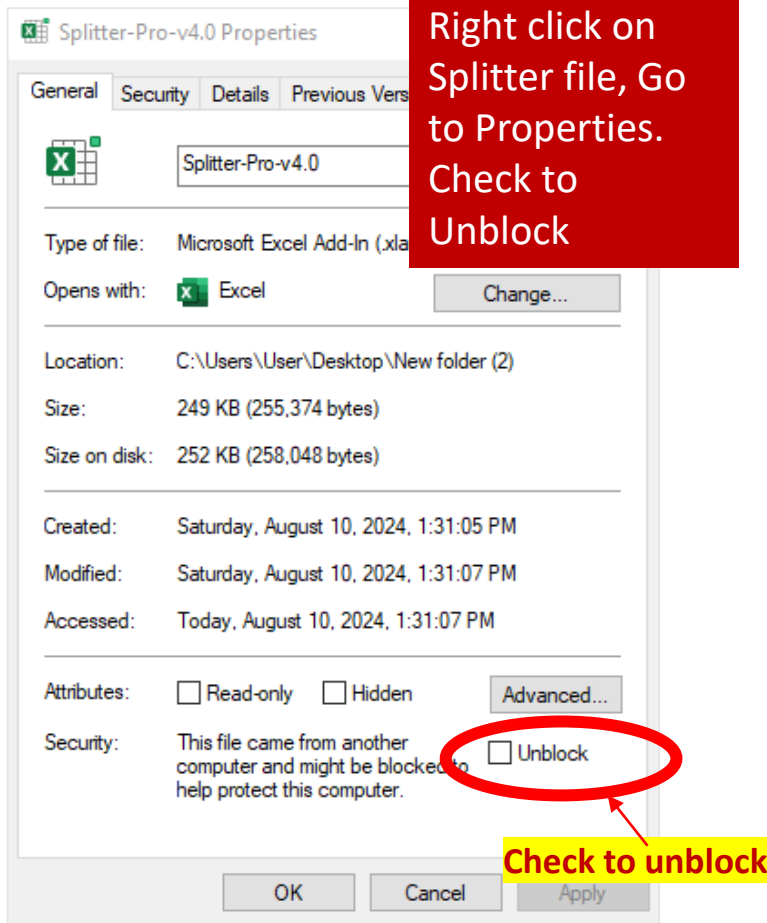
---

Download here  
[www.maxiresearch.com](http://www.maxiresearch.com)

## 2. Enable Macro for Splitter.

- Splitter is an Excel Add-In /Excel **macro** program.
- A couple of options to make sure macro for Splitter is enabled therefore would not be blocked

### Option 1: Unblock in File Property



Right click on Splitter file, Go to Properties. Check to Unblock

Check to unblock

Splitter-Pro-v4.0 Properties

General Security Details Previous Versions

Splitter-Pro-v4.0

Type of file: Microsoft Excel Add-In (.xla)

Opens with: Excel

Location: C:\Users\User\Desktop\New folder (2)

Size: 249 KB (255,374 bytes)

Size on disk: 252 KB (258,048 bytes)

Created: Saturday, August 10, 2024, 1:31:05 PM

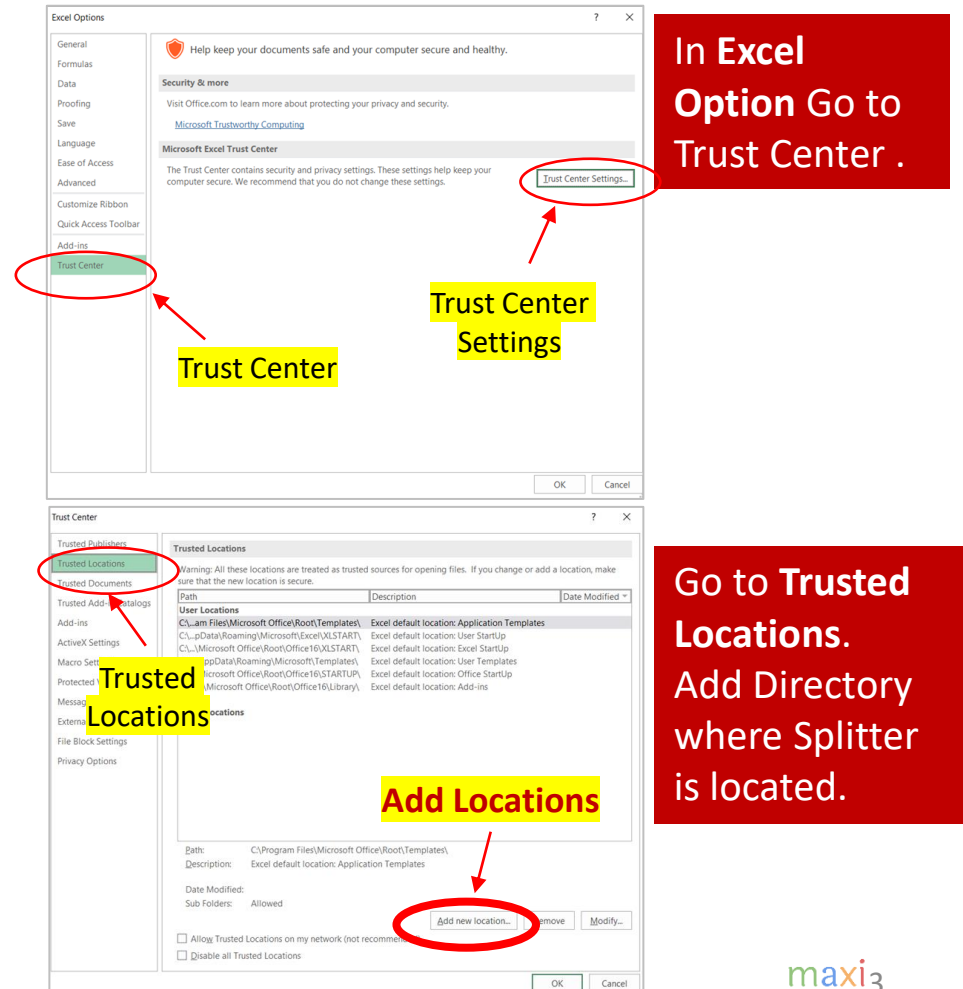
Modified: Saturday, August 10, 2024, 1:31:07 PM

Accessed: Today, August 10, 2024, 1:31:07 PM

Attributes:  Read-only  Hidden  Unblock

Security: This file came from another computer and might be blocked to help protect this computer.

### Option 2 : Add Splitter Directory to Trusted Location



In Excel Option Go to Trust Center .

Trust Center

Trust Center Settings

Trusted Locations

Add Locations

Go to Trusted Locations. Add Directory where Splitter is located.

Excel Options

General Formulas Data Proofing Save Language Ease of Access Advanced Customize Ribbon Quick Access Toolbar Add-ins

Security & more

Visit Office.com to learn more about protecting your privacy and security.

Microsoft Trustworthy Computing

Microsoft Excel Trust Center

The Trust Center contains security and privacy settings. These settings help keep your computer secure. We recommend that you do not change these settings.

Trust Center Settings...

Trust Center

Trust Center

Trusted Locations

Warning: All these locations are treated as trusted sources for opening files. If you change or add a location, make sure that the new location is secure.

Path	Description	Date Modified
C:\Program Files\Microsoft Office\Root\Templates	Excel default location: Application Templates	
C:\Program Data\Roaming\Microsoft\Excel\XLSTART	Excel default location: User StartUp	
C:\Program Data\Roaming\Microsoft\Excel\XLSTART	Excel default location: Excel StartUp	
C:\Program Data\Roaming\Microsoft\Templates	Excel default location: User Templates	
C:\Program Files\Microsoft Office\Root\Office16\STARTUP	Excel default location: Office StartUp	
C:\Program Files\Microsoft Office\Root\Office16\Library	Excel default location: Add-ins	

Path: C:\Program Files\Microsoft Office\Root\Templates

Description: Excel default location: Application Templates

Date Modified:

Sub Folders: Allowed

add new location... remove Modify...

Allow Trusted Locations on my network (not recommended)

Disable all Trusted Locations

# 3. Browse for Splitter (1)

The screenshot shows the Microsoft Excel interface with the 'Excel Options' dialog box open. The 'Add-ins' tab is selected in the left-hand menu. The 'Manage' dropdown is set to 'Excel Add-ins' and the 'Go...' button is highlighted. Red circles and arrows point to these elements, with yellow text boxes labeling them: 'Excel Option', 'Excel Add Ins', and 'Manage Excel Add Ins, Go...'.

**Excel Option**

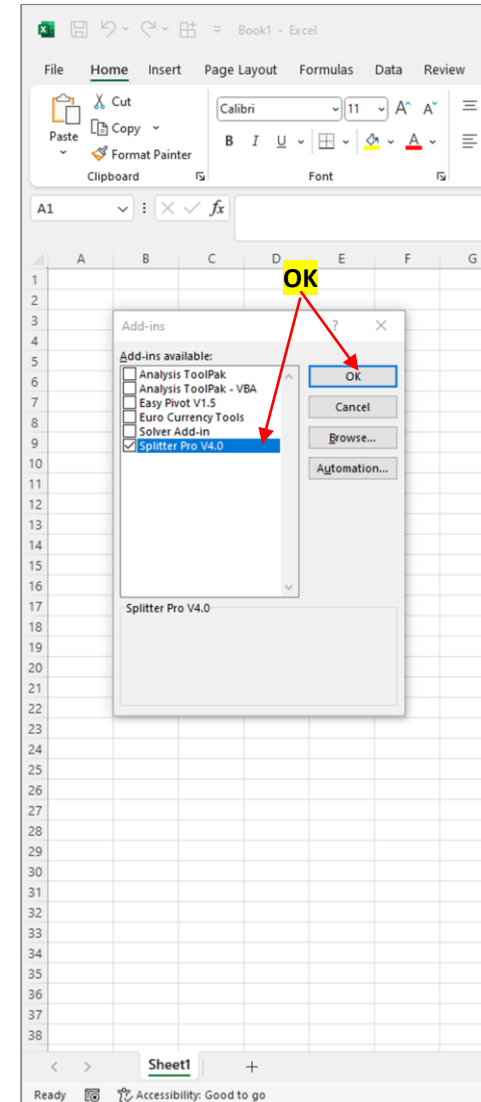
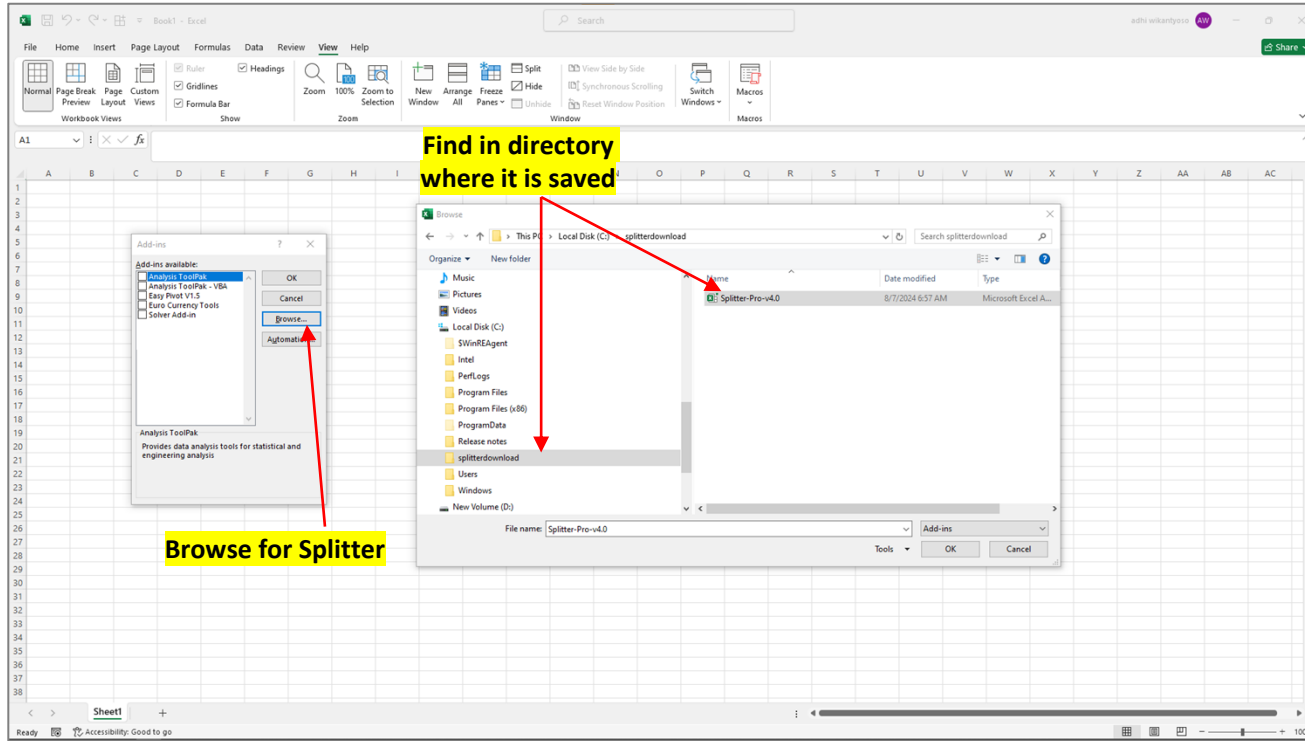
**Excel Add Ins**

**Manage Excel Add Ins, Go...**

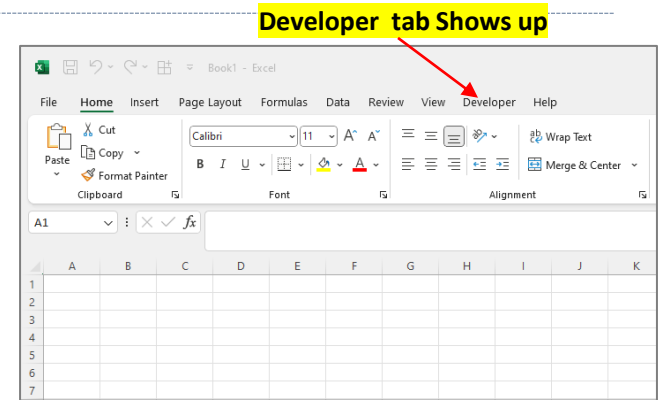
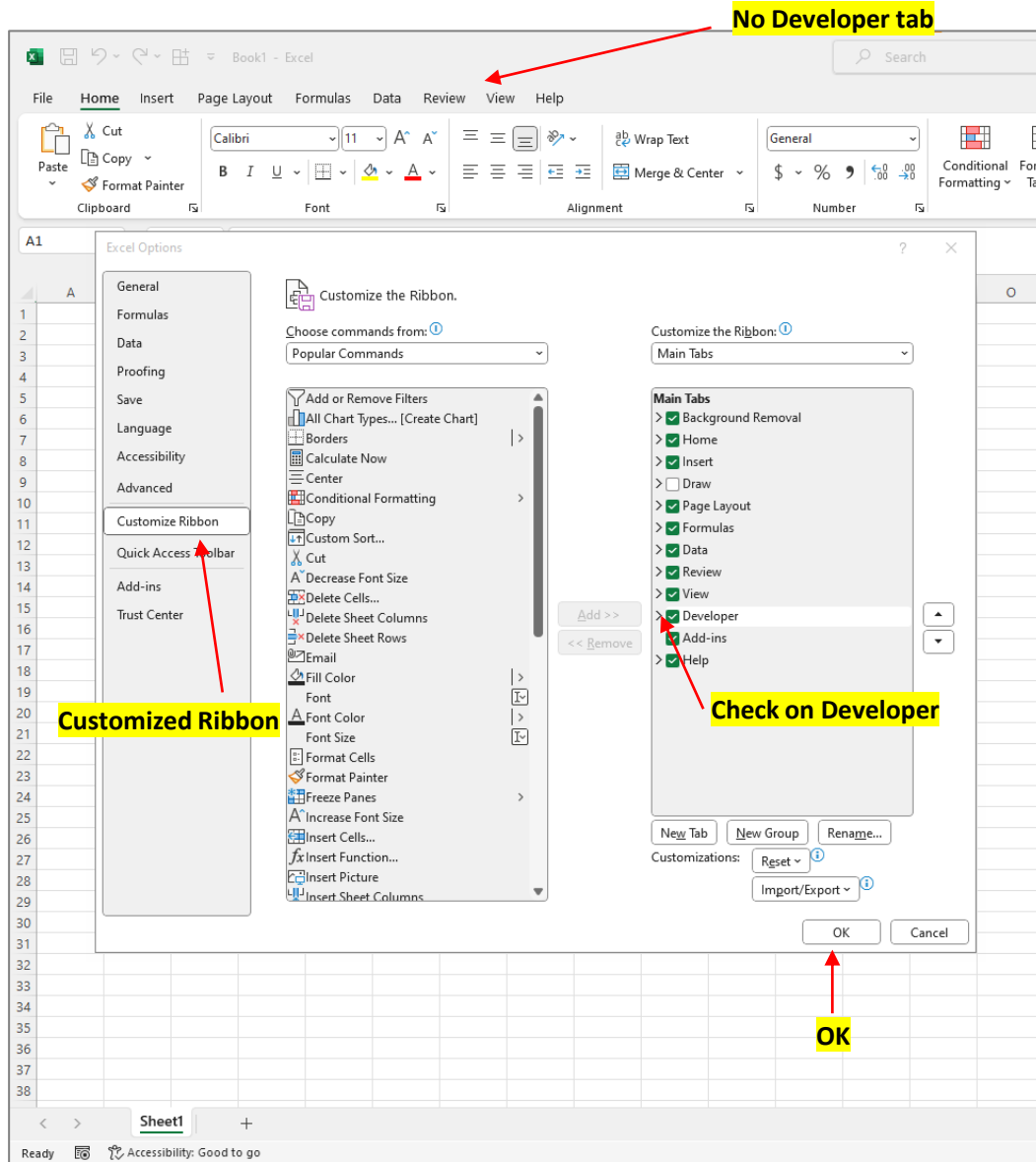
Name	Location	Type
<b>Active Application Add-ins</b>		
No Active Application Add-ins		
<b>Inactive Application Add-ins</b>		
Analysis ToolPak	C:\Program Files\Microsoft Office\root\Offi	Excel Add-in
Analysis ToolPak - VBA	C:\Program Files\Microsoft Office\root\Offi	Excel Add-in
Date (XML)	C:\Program Files\Common Files\Microsoft	Action
Easy Pivot V1.5	C:\Users\User\AppData\Roaming\Microsoft	Excel Add-in
Euro Currency Tools	C:\Program Files\Microsoft Office\root\Offi	Excel Add-in
Inquire	C:\Program Files (x86)\Microsoft Office\Offi	COM Add-in
Microsoft Actions Pane 3		XML Expansion Pack
Microsoft Data Streamer for Excel	C:\Program Files\Microsoft Office\root\Offi	COM Add-in
Microsoft Power Map for Excel	C:\Program Files\Microsoft Office\root\Offi	COM Add-in
Microsoft Power Pivot for Excel	C:\Program Files\Microsoft Office\root\Offi	COM Add-in

Add-in: Analysis ToolPak  
Publisher: Microsoft Office  
Compatibility: No compatibility information available  
Location: C:\Program Files\Microsoft Office\root\Office16\Library\Analysis\ANALYS32.XLL  
Description: Provides data analysis tools for statistical and engineering analysis

# 3. Browse for Splitter (2)



# 4. Turn On Developer Tab

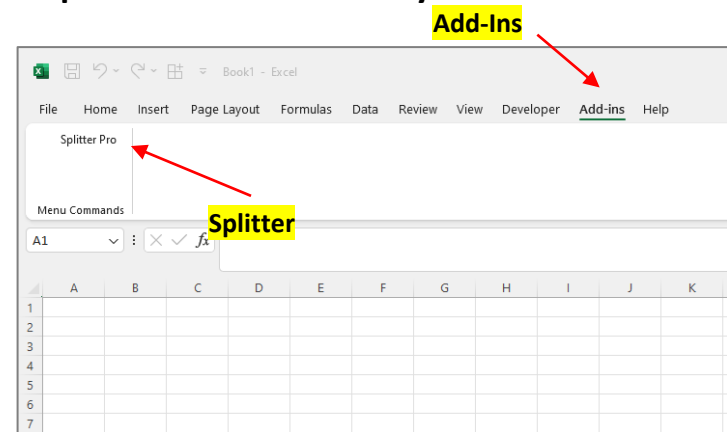
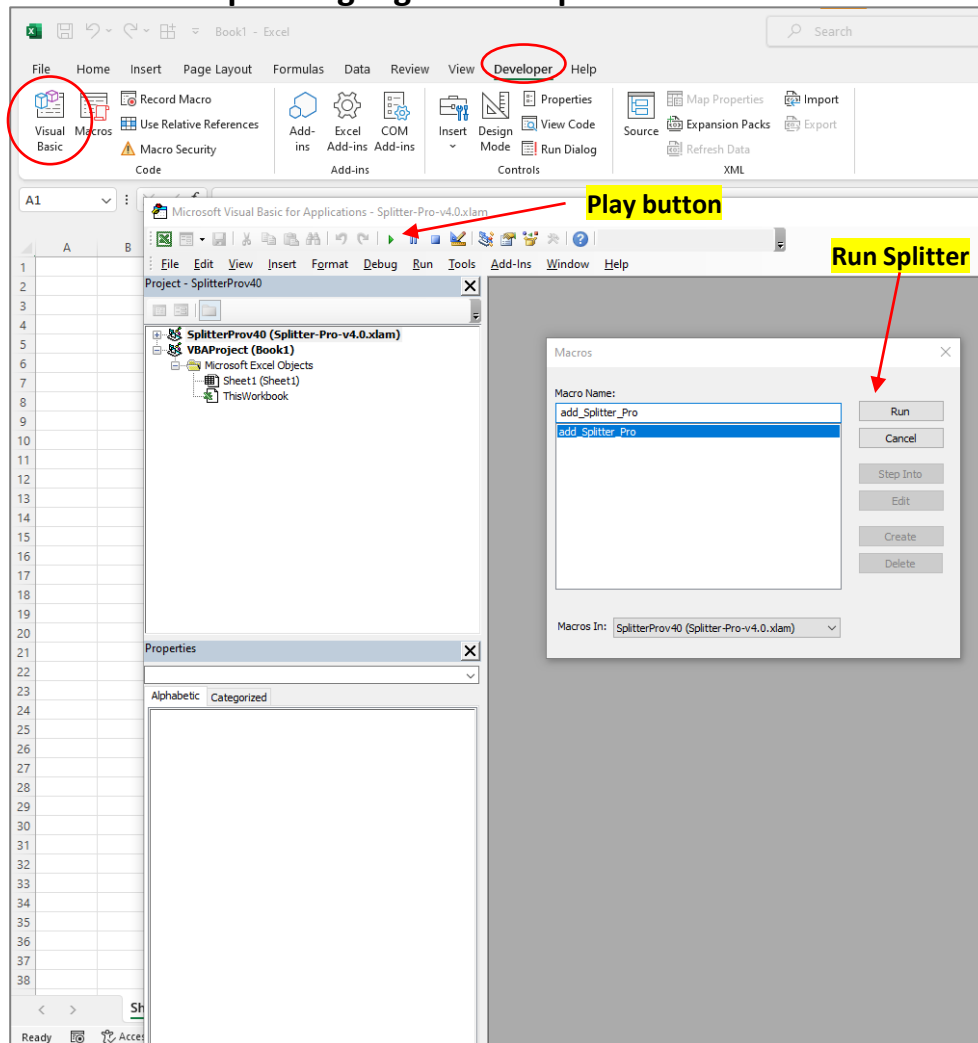




# 5. Run Splitter to Complete Installation

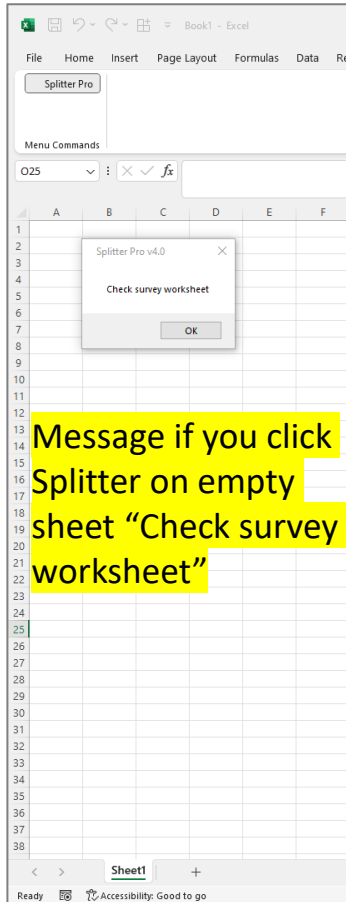
On the Developer tab, click Visual Basic.

A Visual Basic window will appear. In the Project Explorer, highlight Splitter and click the Play button. A new window will open. Highlight "Add Splitter" and click Run

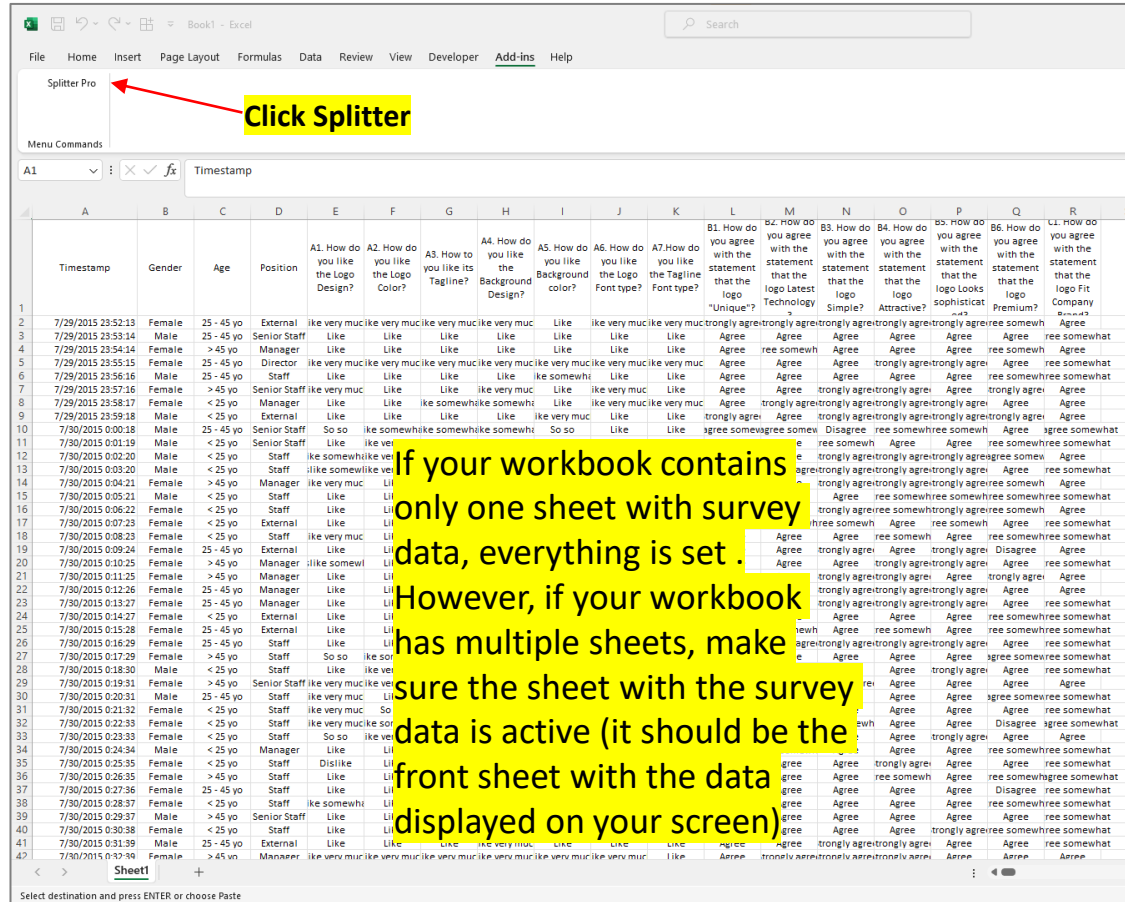


A new tab appears: Add-Ins, with the Splitter button inside it. This completes the installation.

# 6. With Splitter Installed, Run it on Survey Data



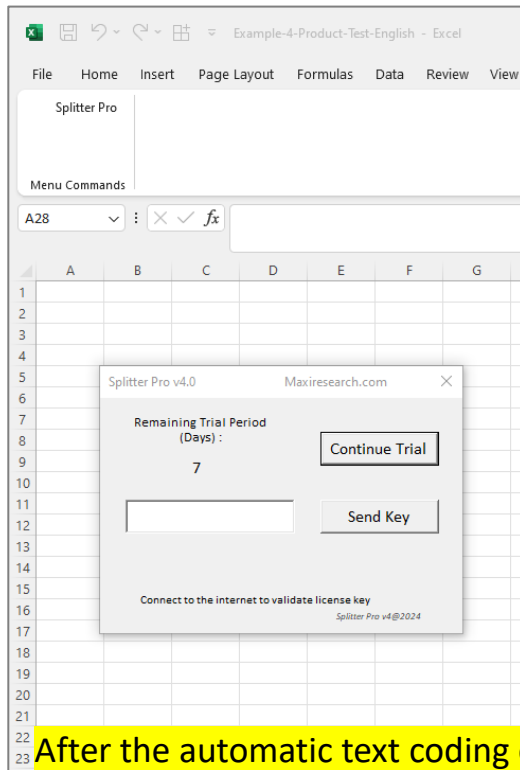
Message if you click Splitter on empty sheet "Check survey worksheet"



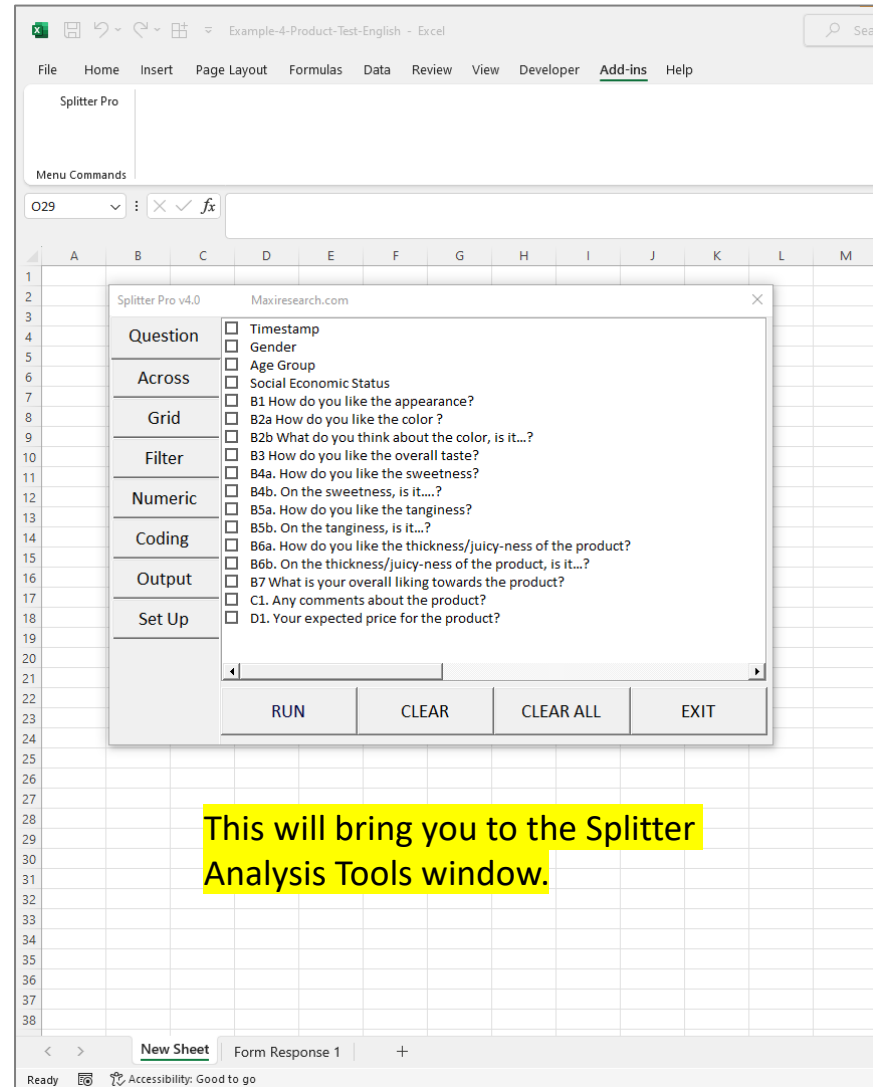
If your workbook contains only one sheet with survey data, everything is set. However, if your workbook has multiple sheets, make sure the sheet with the survey data is active (it should be the front sheet with the data displayed on your screen)



# 7. Continue With Trial Or Enter The Key



After the automatic text coding of the survey data, a window will pop up asking you to either continue with the trial or enter a key



This will bring you to the Splitter Analysis Tools window.

**THANK YOU**

MAXI Research  
[www.maxiresearch.com](http://www.maxiresearch.com)  
Splitter@maxiresearch.com